

EN

ZH

Operating instructions | 操作说明书

Jumbo T

Refrigerator | 冷藏箱

Appliance at a glance

Contents

1	Appliance at a glance	2
1.1	Description of appliance and equipment.....	2
1.2	Appliance range of use.....	2
1.3	Conformity.....	3
1.4	Product data.....	3
1.5	Saving energy.....	3
2	General safety information	3
3	Controls and displays	4
3.1	Operating and control elements.....	4
3.2	Temperature display.....	4
4	Putting into operation	4
4.1	Switching on the appliance.....	4
5	Control	5
5.1	Child proofing.....	5
5.2	Door alarm.....	5
5.3	Refrigerator compartment.....	5
5.4	FreshControl zone.....	7
5.5	Freezer compartment*.....	8
6	Maintenance	9
6.1	Defrosting.....	9
6.2	Cleaning the appliance.....	9
6.3	Customer service.....	9
6.4	Service & Support.....	10
7	Malfunctions	10
8	Decommissioning	11
8.1	Switching off the appliance.....	11
8.2	Taking the appliance out of service.....	11
9	Disposing of the appliance	11

Thank you for choosing one of our products. Your appliance meets the highest of demands and is very easy to use. However, please take time to read this document. It will help you become familiar with your appliance so you fully enjoy it and avoid faults.

Please follow the safety notes.

Changes

The text, images and details reflect the technical features of the appliance at the time of print. They are subject to changes brought about by further development.

Sections that apply to certain models only are marked with an asterix (*).

Instructions are marked with a ► and results are marked with a ▷.

Scope of application

The product range (model number) matches the first digits on the rating plate. This document applies to:

Model	Product range	Unit system
Jumbo T	51092	Euro 60

1 Appliance at a glance

1.1 Description of appliance and equipment

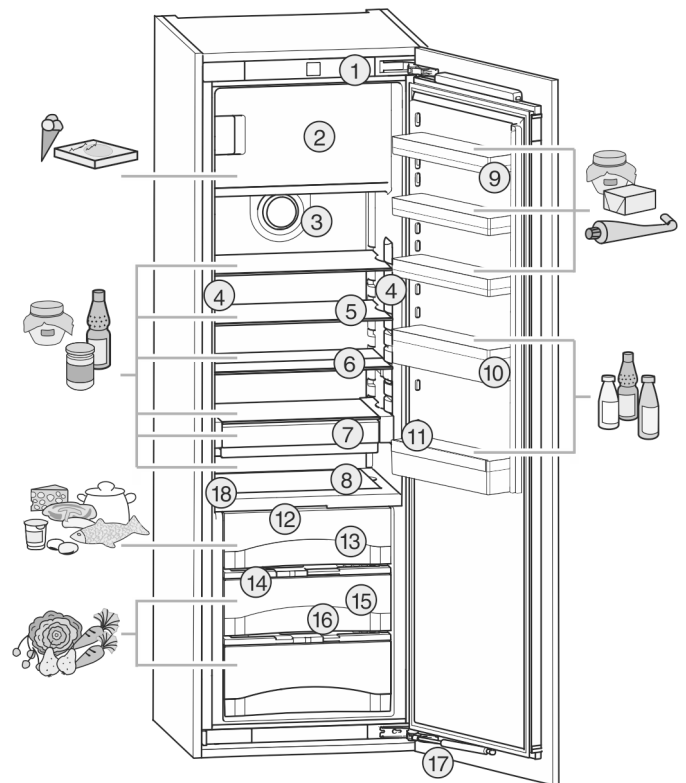


Fig. 1

- | | |
|------------------------------------|---|
| (1) Operating and control elements | (10) Bottle compartment |
| (2) Freezer compartment* | (11) Bottle finger |
| (3) Fan | (12) LED lighting in FreshControl zone |
| (4) LED light column, double sided | (13) FreshControl compartment, dry zone |
| (5) Tray | (14) Humidity control plate |
| (6) Tray, divisible | (15) FreshControl compartment, wet zone |
| (7) FlexBox | (16) Drain hole |
| (8) Glass shelf | (17) Soft stop mechanism |
| (9) Hang-on tray | (18) Type plate |

Note

- Place food inside the appliance as shown in the diagram. This allows the appliance to save energy during operation.
- Shelves, drawers and baskets are arranged for optimum energy efficiency on delivery.

1.2 Appliance range of use

Intended use

The appliance is only suitable for cooling food products in a domestic or household-like environment. This includes, for example, use:

- in staff kitchens, bed and breakfast establishments,
- by guests in country houses, hotels, motels and other accommodation,
- for catering and similar services in the wholesale trade.

All other types of use are not permitted.

Foreseeable misuse

The following applications are expressly forbidden:

- Storing and refrigerating medicines, blood plasma, laboratory preparations or similar substances and products based on the Medical Device Directive 2007/47/EC
- Use in areas at risk of explosions

Misusing the appliance may lead to damage to the goods stored or they may spoil.

Climate classifications

Depending on the climate classification the appliance is designed to operate in restricted ambient temperatures. The climate classification applying to your appliance is printed on the rating plate.

Note

► Keep to the specified ambient temperatures in order to guarantee that the appliance works properly.

Climate classification	for ambient temperatures of
SN	10 °C to 32 °C
N	16 °C to 32 °C
ST	16 °C to 38 °C
T	16 °C to 43 °C

1.3 Conformity

The refrigerant circuit has been tested for leaks. In installed condition, this appliance complies with the applicable safety stipulations and with directives 2014/35/EU, 2014/30/EU, 2009/125/EG, 2011/65/EU and 2010/30/EU.

The FreshControl compartment fulfils the requirements of a cold storage compartment according to DIN EN 62552.

1.4 Product data

Product data is included with the appliance, as per Directive (EU) 2017/1369. The complete product data sheet is available on the Liebherr website under Downloads.

1.5 Saving energy

- Pay attention to good ventilation. Do not cover ventilation holes or grids.
- Always keep the fan air slits clear.
- Do not install the appliance in direct sunlight, next to an oven, radiator or similar.
- Energy consumption is dependent on the installation conditions, e.g. ambient temperature (see 1.2) . If the ambient temperature deviates from the standard temperature of 25°C, the energy consumption may differ.
- Open the appliance for as short a time as possible.
- The lower the temperature is set the higher the energy consumption.
- Arrange the food in an organised way (see 1) .

- Keep all food properly packed and covered. This prevents frost from forming.
- Only take food out for as long as necessary so that it doesn't warm up too much.
- Inserting warm food: allow to cool down to room temperature first.
- Thaw frozen food in the refrigerator.*
- If there is a thick layer of frost in the appliance: defrost the appliance.*

2 General safety information

Danger for the user:

- This device can be used by children and people with impaired physical, sensory or mental abilities or with a lack of experience and knowledge provided that they are supervised or have received instruction in the safe use of this device, and about the resulting hazards. Children must not play with this appliance. Cleaning and user maintenance work must not be carried out by children without adult supervision. Children aged between 3 and 8 are allowed to load and unload the appliance. Children below the age of 3 must be kept away from the appliance unless they are under continuous adult supervision.
- When disconnecting the appliance from the supply, always take hold of the plug. Do not pull the cable.
- In the event of a fault pull out the mains plug or deactivate the fuse.
- Do not damage the mains power cable. Do not operate the appliance with a defective mains power cable.
- Repairs, interventions on the appliance and the replacement of mains connection line may only be carried out by After-Sales Service or other suitably trained specialist personnel.
- Only install, connect and dispose of the appliance according to the instructions.
- Only use the appliance when it is installed.
- Please keep these instructions in a safe place and pass them on to any subsequent owners.
- Special lights, such as LED lights on the appliance, are used to illuminate the interior of the appliance and are not suitable for room lighting.

Fire hazard:

- Refrigerant R 600a is environmentally friendly, but flammable. Leaking refrigerant may ignite.
 - Do not damage the refrigerant circuit pipes.
 - Do not use an open flame or other source of ignition inside the appliance.
 - Do not use electrical appliances inside the appliance (e.g. steam cleaners, heaters, ice cream makers, etc.).

* Depending on model and options

Controls and displays

- If the refrigerant leaks: remove any naked flames or ignition sources from the vicinity of the leakage point. Properly air the room. Inform customer services.
- Do not store explosives or sprays using combustible propellants such as butane, propane, pentane, etc. in the appliance. To identify these spray cans, look for the list of contents printed on the can, or a flame symbol. Gases possibly escaping may ignite due to electrical components.
- Please be sure to store alcoholic drinks or other packaging containing alcohol in tightly closed containers. Any alcohol that leaks out may be ignited by electrical components.

Danger of tipping and falling:

- Do not misuse the plinth, drawers, doors etc. as a step or for support. This applies particularly to children.

Danger of food poisoning:

- Do not consume food which has been stored too long.

Danger of frostbite, numbness and pain:

- Avoid lasting skin contact with cold surfaces or refrigerated/frozen food or take protective steps, e.g. wear gloves. Do not consume ice cream, water ice or ice cubes immediately and do not consume them too cold.



Danger of injury and damage:

- Hot steam can lead to injury. Do not use electrical heating or steam cleaning equipment, open flames or defrosting sprays to defrost.
- Do not use sharp implements to remove the ice.


Danger of crushing:



- Do not hold the hinge when opening and closing the door. Fingers may get caught.

Symbols on the appliance:

	The symbol can be located on the compressor. It refers to the oil in the compressor and indicates the following danger: Swallowing or inhaling can be fatal. This is only relevant for recycling. There is no danger in normal operation.
	A sticker to this effect may be applied to the rear of the appliance. It refers to the foam-padded panels in the door and/or the housing. This is only relevant for recycling. Do not remove the sticker.

Please observe the specific information in the other sections:

	DANGER	identifies a situation involving direct danger which, if not obviated, may
---	---------------	--

		result in death or severe bodily injury.
	WARNING	identifies a dangerous situation which, if not obviated, may result in death or severe bodily injury.
	CAUTION	identifies a dangerous situation which, if not obviated, may result in minor or medium bodily injury.
	NOTICE	identifies a dangerous situation which, if not obviated, may result in damage to property.
	Note	identifies useful information and tips.

3 Controls and displays

3.1 Operating and control elements

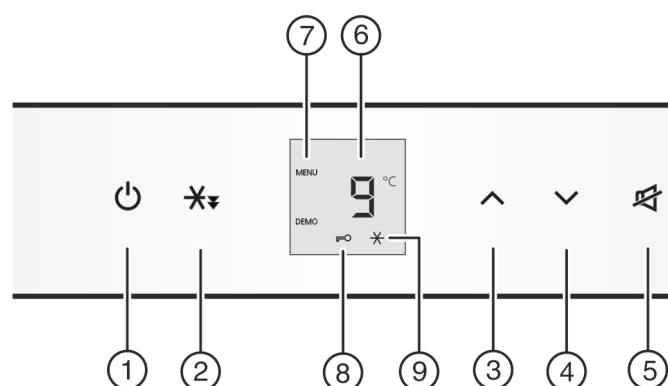


Fig. 2

- | | |
|-------------------------|-------------------------|
| (1) On/Off button | (6) Temperature display |
| (2) Quick Cool button | (7) Menu symbol |
| (3) Up setting button | (8) Child safety symbol |
| (4) Down setting button | (9) Quick Cool symbol |
| (5) Alarm button | |

3.2 Temperature display

During normal operation, the display shows:

- the average cooling temperature

The following displays indicate a fault. Possible causes and solutions: (see 7) .

- **F0** to **F9**

4 Putting into operation

4.1 Switching on the appliance

Switch on the appliance approx. 2 hours before loading for the first time.*

- ▶ Open the door.
- ▶ Press On/Off button Fig. 2 (1).
- ▷ The temperature display indicates the current temperature.
- ▷ The interior light is on when the door is open.
- ▷ If "DEMO" is displayed, demo mode is activated. Please contact the after sales service.

5 Control

5.1 Child proofing

The child-proofing function enables you to make sure that the appliance is not inadvertently switched off by playing children.



5.1.1 Setting the child lock function

- ▶ To activate setting mode: Press and hold the SuperCool button *Fig. 2 (2)* for approx. 5 s.
 - ▷ The display indicates **c**.
- When **c** is shown on the display:
- ▶ To switch on the child-proof lock, press the SuperCool button *Fig. 2 (2)* briefly.



- ▷ The child lock symbol *Fig. 2 (8)* shines. **c** flashes in the display.
 - When **c0** is shown on the display:
 - ▶ To switch off the child-proof lock, press the SuperCool button *Fig. 2 (2)* briefly.
 - ▷ The child lock symbol *Fig. 2 (8)* goes out. **c** flashes in the display.
 - ▶ To deactivate the set-up mode: press On/Off button *Fig. 2 (1)*.
- or-**
- ▶ Wait for 5 minutes.
 - ▷ The temperature is indicated again in the temperature display.

5.2 Door alarm

For the fridge compartment

An audible signal sounds if the door is open for longer than 60 seconds.



The audible signal stops automatically when the door is closed.

5.2.1 Muting the door alarm

The audible signal can be switched off when the door is open. The audible signal remains activated as long as the door is open.

- ▶ Press alarm button *Fig. 2 (5)*.
- ▷ The door alarm is silenced.

5.3 Refrigerator compartment

Different temperature ranges are set in the fridge compartment because of the natural air circulation. It is coldest directly above the plate dividing the FreshControl area and the rear wall. The warmest area is at the top front and in the door.

5.3.1 Food refrigeration

Note

The energy consumption increases and the cooling performance decreases if the ventilation is inadequate.

- ▶ Always keep the air slits of the fan free.
- ▶ Place butter and preserves in the upper area and in the door (see 1).
- ▶ Use recyclable plastic, metal, aluminium and glass containers and cling film for wrapping.
- ▶ Always store liquids and food which is subject to odour or taste transfer in closed containers or cover them.

- ▶ Use the front area of the refrigerator compartment floor only for briefly putting down cooled products, e.g. when rearranging and sorting. However do not leave cooled products there otherwise they may be pushed back or tipped over when the door is closed.
- ▶ Do not store food too close together to enable good air circulation.

5.3.2 Setting the temperature

The temperature depends on the following factors:

- the frequency of opening the door
- the room temperature of the installation location
- the type, temperature and quantity of the food

The temperature can be set from 9 °C to 3 °C, the recommended temperature is 5 °C.

An average temperature of about -18 °C is reached in the freezer compartment.*


Note

If the temperature is to be colder than 3 °C:

- ▶ set the cooling temperature to 3 °C.
- ▶ Set the FreshControl temperature to a value between **b4** (slightly colder) and **b1** (coldest)

- ▶ For a higher temperature setting: press Up button *Fig. 2 (3)*.
- ▶ For a lower temperature setting: press Down button *Fig. 2 (4)*.
- ▷ When the button is pressed the first time, the previously set value is indicated, flashing, in the temperature display.
- ▶ To change the temperature in 1 °C steps: briefly press the button.
- ▶ To change the temperature continuously: hold down the button.
- ▷ The value is displayed flashing during the setting operation.
- ▷ The actual temperature is displayed about 5 s after the last press of a button. The temperature slowly adjusts to the new value.

5.3.3 Quick Cool

Quick Cool selects the lowest cooling temperature. This gives you colder storage temperatures. Use Quick Cool to quickly cool large quantities of food. 

Quick Cool uses slightly more energy.

Cool with Quick Cool

- ▶ Briefly press the Quick Cool button *Fig. 2 (2)*.
- ▷ The Quick Cool *Fig. 2 (9)* symbol lights up on the display.
- ▷ The cooling temperature drops to the lowest setting. Quick Cool is on.
- ▷ Quick Cool switches off automatically after 12 hours. The appliance continues in energy-saving Normal mode.

Switching Quick Cool off ahead of schedule

- ▶ Briefly press the Quick Cool button *Fig. 2 (2)*.
- ▷ The Quick Cool *Fig. 2 (9)* symbol dims on the display.
- ▷ Quick Cool is off.

5.3.4 Tray

Shifting or removing the trays

The trays are prevented from being pulled out accidentally by pull out stops.

Control

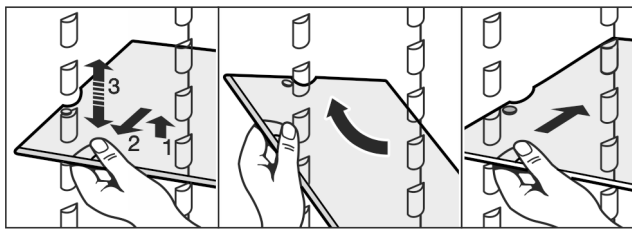
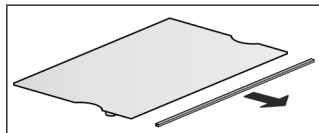


Fig. 3

- ▶ Lift the tray and pull it out towards you.
- ▶ To remove the tray completely, set it at an angle and pull it out towards you.
- ▶ Push the tray back in at the desired height. The removal stops must point downwards and be positioned behind the front contact surface.

Disassemble the tray

- ▶ The trays can be dismantled for cleaning.



5.3.5 Using the split tray

- ▶ Push the split tray underneath as in the illustration

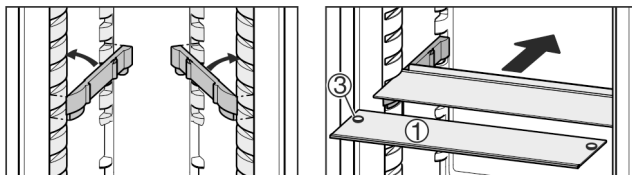
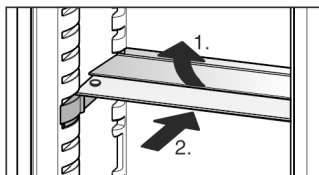


Fig. 4

- ▶ The glass tray (1) with the pull out stops must be at the front so that the stops (3) point downward.
- ▶ If your appliance has a freezer compartment, do not mount support bars or separable trays in front of the fan.*

5.3.6 Bottle shelf

You can remove the bottle shelf in the fridge section for cleaning:

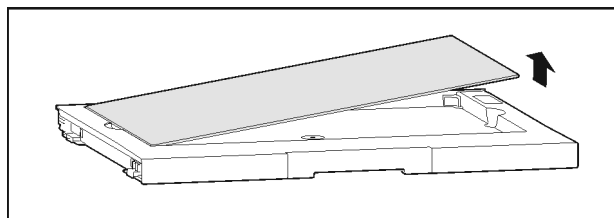


Fig. 5

5.3.7 FlexBox

The FlexBox provides space for compact foodstuffs and packages, pots and glasses.

Using the FlexBox

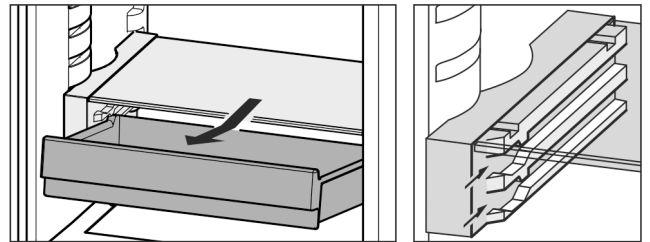
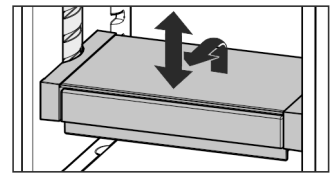


Fig. 6

- ▶ You can remove the FlexBox drawer and slide it back in at 2 different heights.
- ▶ You can shift the height of the entire FlexBox drawer.
- ▶ To remove completely, set at an angle and pull towards you.



Disassembling the FlexBox

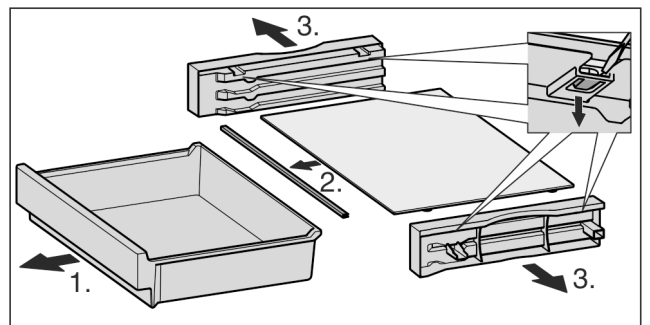


Fig. 7

- ▶ You can take the FlexBox apart for cleaning.

5.3.8 Hang-on trays

Move the hang-on trays

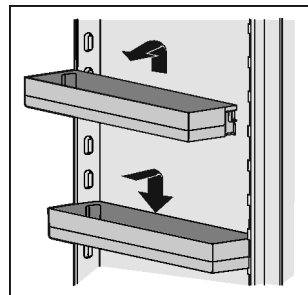


Fig. 8

- ▶ Remove the hang-on trays as per the illustration

Disassemble the hang-on trays

- ▶ The hang-on trays can be dismantled for cleaning.

5.3.9 Using the bottle finger

Use the bottle finger to prevent bottles from falling over. If you want to use just one part to keep bottles in place, you can remove half of the finger.

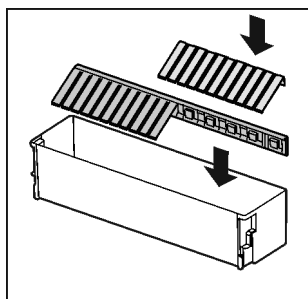


Fig. 9

Removing and inserting the bottle finger:

- ▶ Pull the bottle finger vertically upwards or push down to click into place.

Removing and inserting the finger:

- ▶ Pull the right and/or left half vertically upwards.
- ▶ Choose the position and push the finger halves down to click into place.

5.4 FreshControl zone

In the FreshControl zone, certain fresh foods can be kept fresh for up to three times longer compared to conventional cooling methods.

For food with an indicated best before date, the date specified on the packaging always applies.

5.4.1 Dry zone



This zone is suitable for storing dry or packaged food (e.g. dairy products, meat, fish, sausage). Here a relatively dry storage climate is set.

5.4.2 Wet zone

The humidity in this zone depends on the moisture content of the items being stored and the number of times the door is opened. You can set the humidity yourself.

The wet zone is suitable for storing loose salad, vegetables and fruit with a high moisture content. When the drawer is very full a very fresh climate is set with a humidity of up to a max. of 90%.

5.4.3 Wet zone setup

- ▶  Low humidity: Move the slide control to the left.
- ▶  High humidity: Move the slide control to the right.



5.4.4 Storing food

Note

- ▶ Do not put the following in the FreshControl section: cold-sensitive vegetables including cucumbers, aubergines, tomatoes, courgettes and any cold-sensitive tropical fruits.
- ▶ To prevent food spoilage due to transfer of germs: Store unwrapped animal and vegetable products separate from one another in the drawers. This also applies to different sorts of meat.
If food has to be stored together due to lack of space:
▶ wrap the food.

5.4.5 Storage times

Guidelines for storage periods at low humidity 0 °C			
Butter	up to	90	days
Hard cheese	up to	110	days

Guidelines for storage periods at low humidity 0 °C			
Milk	up to	12	days
Cold meats	up to	9	days
Poultry	up to	6	days
Pork	up to	7	days
Beef	up to	7	days
Game	up to	7	days

Note

- ▶ Please note that protein-rich food deteriorates faster, i.e. shellfish and crustaceans deteriorate faster than fish, fish faster than meat.

Guidelines for storage periods at high humidity 0 °C			
Vegetables, salads			
Artichokes	up to	14	days
Celery	up to	28	days
Cauliflower	up to	21	days
Broccoli	up to	13	days
Chicory	up to	27	days
Leaf lettuce	up to	19	days
Peas	up to	14	days
Kale	up to	14	days
Carrots	up to	80	days
Garlic	up to	160	days
Cabbage	up to	55	days
Round lettuce	up to	13	days
Herbs	up to	13	days
Leeks	up to	29	days
Mushrooms	up to	7	days
Radishes	up to	10	days
Sprouts	up to	20	days
Asparagus	up to	18	days
Spinach	up to	13	days
Savoy cabbage	up to	20	days
Fruit			
Apricots	up to	13	days
Apples	up to	80	days
Pears	up to	55	days
Blackberries	up to	3	days
Dates	up to	180	days
Strawberries	up to	7	days
Figs	up to	7	days
Blueberries	up to	9	days
Raspberries	up to	3	days
Red currants	up to	7	days
Cherries, sweet	up to	14	days
Kiwis	up to	80	days

Control

Guidelines for storage periods at high humidity 0 °C			
Peaches	up to	13	days
Plums	up to	20	days
Cranberries	up to	60	days
Rhubarb	up to	13	days
Gooseberries	up to	13	days
Grapes	up to	29	days

5.4.6 Setting the temperature in the FreshControl zone.

Recommended refrigerator setting: 5 °C. The FreshControl temperature is controlled automatically and is between 0 °C and 3 °C.

You can set a slightly higher or lower temperature. The temperature can be adjusted between **b1** (coldest temperature) and **b9** (hottest temperature). The default is **b5**. With levels **b1** to **b4** the temperature may drop below 0 °C so that the food can freeze.

- ▶ Activate setting mode: Press the Quick Cool button *Fig. 2 (2)* for around 5 seconds.
- ▷ The Menu symbol *Fig. 2 (7)* lights up. The temperature display shows **c**.
- ▶ Keep pressing the Up *Fig. 2 (3)* button until **b** flashes on the display.
- ▶ Confirm: Briefly press the Quick Cool button *Fig. 2 (2)*.
- ▶ Setting a higher temperature: Press the Up *Fig. 2 (3)* button.
- ▶ Setting a lower temperature: Press the Down *Fig. 2 (4)* button.
- ▶ Confirm: Press the Quick Cool button *Fig. 2 (2)*.
- ▷ The unit gradually reaches the set temperature.



- ▶ Deactivate setting mode: Press the On/Off *Fig. 2 (1)* button.
- or-
- ▶ Wait for 5 minutes.
- ▷ The temperature is indicated again in the temperature display.

5.4.7 Drawers with cushioners

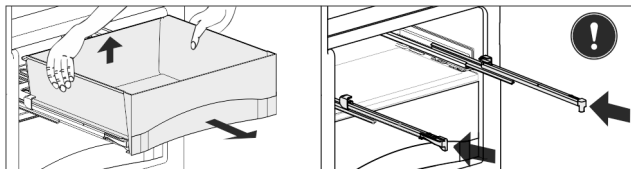


Fig. 10

- ▶ Pull out the drawer, lift it at the back and draw it forwards for removal.
- ▶ Push the rails in again!

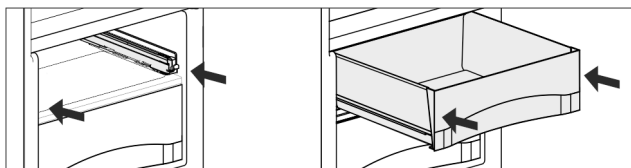


Fig. 11

- ▶ Push the rails in.
- ▶ Attach the drawer and push it in until it engages audibly at the back.

5.4.8 Humidity control plate

- ▶ To remove the humidity control plate: Having removed the drawers, carefully draw the plate forwards and lower it for removal.

5.5 Freezer compartment*

You can store frozen food for several months, make ice cubes and freeze fresh food in the freezer compartment at a temperature of -18 °C and lower.

The air temperature in the compartment, measured by thermometer or other instruments, may fluctuate.

5.5.1 Freezing food

The rating plate indicates the maximum quantity of fresh food you can freeze within 24 hours (see 1) under "Freezing capacity ... kg/24h".



CAUTION

Risk of injury due to broken glass!

Bottles and cans containing drinks may burst when being frozen. This applies particularly to sparkling drinks.

- ▶ Do not freeze bottles and cans containing drinks!

- ▶ Switch on Quick Cool 4 hours before freezing and set the temperature to 4 °C or less.*
- ▶ Once the food is frozen, you can reset the temperature and switch off Quick Cool.*
- ▶ Switch on Fast-Freeze when you load the product.

So that the food is rapidly frozen through to the core, do not exceed the following quantities per pack

- Fruit, vegetables up to 1 kg
- Meat up to 2.5 kg
- ▶ Pack the food in portions in freezer bags, reusable plastic, metal or aluminium containers

5.5.2 Storage times

Guide times for storing various types of food in the freezer compartment:

Ice cream	2 to 6 months
Sausage, ham	2 to 6 months
Bread, bakery products	2 to 6 months
Game, pork	6 to 10 months
Fish, fatty	2 to 6 months
Fish, lean	6 to 12 months
Cheese	2 to 6 months
Poultry, beef	6 to 12 months
Vegetables, fruit	6 to 12 months

Storage times given are guide times.

5.5.3 Thawing food

- in the refrigerator compartment
- in a microwave oven
- in a conventional or fan oven
- at room temperature
- ▶ Remove only as much food as is required. Use thawed food as quickly as possible.
- ▶ Food once thawed should be re-frozen only in exceptional cases.

6 Maintenance

6.1 Defrosting

6.1.1 Defrosting refrigerator compartment

The refrigerator compartment is defrosted automatically. The water evaporates. Drops of water on the rear wall are functionally conditioned and perfectly normal.

- ▶ Clean the drain hole at regular intervals to allow the defrost water to drain (see 6.2) .

6.1.2 Defrosting freezer compartment*

A layer of frost and ice forms in the freezer compartment after the appliance has been in use for a lengthy period of time. This is quite normal. The layer of frost and ice forms more quickly if the door is opened frequently or if the food is warm when placed inside. However, a thick layer of ice will increase the appliance's energy consumption. You should therefore defrost the appliance regularly.



WARNING

Danger of injury and damage

- ▶ Do not use any mechanical aids or other means not recommended by the manufacturer in order to accelerate the defrosting process.
 - ▶ Do not use electrical heating or steam cleaning equipment, open flames or defrosting sprays to defrost.
 - ▶ Do not use sharp implements to remove the ice.
 - ▶ Do not damage the pipework in the refrigerant circuit.
-
- ▶ Switch off the appliance.
 - ▷ The temperature display goes out.
 - ▷ If the temperature display does not go out, the child-proofing function (see 5.1) is active.
 - ▶ Pull out the plug.
 - ▶ Wrap the frozen food in newspaper or blankets and store in a cool place.
 - ▶ Leave the compartment and appliance door open during defrosting.
 - ▶ Remove detached pieces of ice.
 - ▶ Pay attention that the defrost water does not run into the kitchen unit.
 - ▶ If necessary, pick up defrost water several times, using a sponge or cloth.
 - ▶ Clean the compartment (see 6.2) .

6.2 Cleaning the appliance



WARNING

Risk of injury and damage as a result of hot steam!

Hot steam can lead to burns and can damage the surfaces.

- ▶ Do not use any steam cleaners!

NOTICE

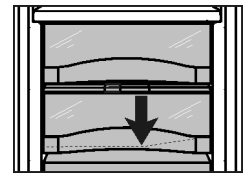
Incorrect cleaning damages the appliance!

- ▶ Do not use cleaning agents in concentrated form.
- ▶ Do not use any scouring or abrasive sponges or steel wool.
- ▶ Do not use any sharp or abrasive cleaning agents, nor any that contain sand, chloride or acid.
- ▶ Do not use chemical solvents.
- ▶ Do not damage or remove the type plate on the inside of the appliance. It is important for the customer service.
- ▶ Do not pull off, bend or damage cables or other components.
- ▶ Do not allow any cleaning water to enter the drain channel, ventilation grille or electrical parts.
- ▶ Please use soft cleaning cloths and a universal pH-neutral cleaning agent.
- ▶ Please use cleaning and care products suitable for contact with foodstuffs in the appliance interior.

- ▶ **Empty appliance.**
- ▶ **Pull out the power plug.**



- ▶ Clean **plastic outer and inner surfaces** with lukewarm water and a little washing-up liquid.
- ▶ Clean **drain hole**: Remove deposits with a narrow instrument, e.g. a cotton bud.



- ▶ Most of the **parts** can be dismantled for cleaning: see the relevant chapter.
- ▶ **Clean drawers** by hand with lukewarm water and a little washing up liquid.
- ▶ All the **other fittings** can be put in the dishwasher.
- ▶ Only use a damp cloth to clean the **telescopic rails**. The grease in the runners is for lubrication purposes and must not be removed.

After cleaning:

- ▶ Wipe dry the appliance and items of equipment.
- ▶ Connect the appliance and switch it on again. When the temperature is sufficiently cold:
- ▶ Put the food back inside.

6.3 Customer service

First check whether you can correct the fault yourself by reference to the list (see 7) . If this is not the case, please contact the customer service whose address is given in the enclosed customer service list.



WARNING

Risk of injury if repair work is not carried out professionally!

- ▶ Have any repairs and action - not expressly specified - on the appliance and mains cable carried out by service personnel only. (see 6)
-
- ▶ Read the appliance name *Fig. 12 (1)*, service no. *Fig. 12 (2)* and serial no. *Fig. 12 (3)* on the rating plate. The rating plate can be found on the inside of the appliance on the left.

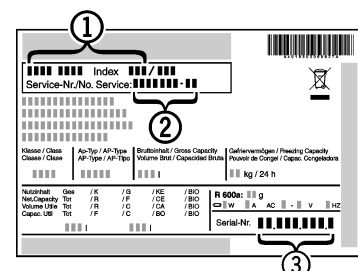


Fig. 12

Malfunctions

- ▶ Notify our customer service team and give them the error, the appliance name *Fig. 12 (1)*, service no. *Fig. 12 (2)* and serial no. *Fig. 12 (3)*
- ▷ This will help us to provide you with a faster and more accurate service.
- ▶ Keep the appliance closed until the customer service arrives.
- ▷ The food will stay cool longer.
- ▶ Pull out the mains plug (not by pulling the connecting cable) or switch off the fuse.

6.4 Service & Support

The **Troubleshooting** section gives you valuable advice on what to do in case of minor errors. This saves you having to call out an engineer and avoids potential costs.

For information about the warranty, please go to www.vzug.com -> Service -> Garantieinformationen (Applicable details). Please read these carefully.

Register your appliance today:

- online at www.vzug.com -> Service -> Garantieerfassung (Registration) or
- use the supplied registration card, if applicable.

This means we can give you the best support in the case of a breakdown during the warranty period. You will need the serial number (SN) and model name to register. You can find this information on the rating plate of the appliance.

About my appliance:

Serial no.: _____ **Model:** _____

Always have these details to hand in case you have to contact V-ZUG. Many thanks.

Your repair order

In Switzerland you can call a free service number 0800 850 850 to talk directly to your nearest service centre. Call us to arrange an engineer to visit you.

Customers outside Switzerland can go to www.vzug.com -> Service -> Service Numbers / Contact your local Service Centre.

General and technical inquiries, accessories, service and warranty extension

V-ZUG is happy to help you with general administrative and technical enquiries, accept your orders for accessories and spare parts and inform you about our advanced service contracts. Just go to www.v-zug.com, info@vzug.com to find your local service centre and in Switzerland (+41) 58 767 67 67.

7 Malfunctions

Your appliance is designed and manufactured for a long life span and reliable operation. If a malfunction nonetheless occurs during operation, check whether it is due to a handling error. In this case you will have to be charged for the costs incurred, even during the warranty period. You may be able to rectify the following faults yourself:

Appliance does not work.

- The appliance is not switched on.
- ▶ Switch on the appliance.
- The power plug is not properly inserted in the wall socket.
- ▶ Check power plug.
- The fuse of the wall socket is not in order.
- ▶ Check fuse.

The compressor runs for a long time.

- The compressor switches to a low speed when little cold is needed. Although the running time is increased as a result, energy is saved.
- ▶ This is normal in energy-saving models.

- SuperCool is switched on.
- ▶ The compressor runs longer to cool the food quickly. This is normal.

Excessive noise.

- Due to the various speed steps, speed-regulated* compressors can generate different running noises.
- ▶ The sound is normal.

A bubbling and gurgling noise.

- This noise comes from the refrigerant flowing in the refrigeration circuit.
- ▶ The sound is normal.

A quiet clicking noise.

- The noise is produced whenever the refrigeration unit (motor) automatically switches on or off.
- ▶ The sound is normal.

A hum. It is briefly a little louder when the refrigeration unit (the motor) switches on.

- Refrigeration increases automatically when the Fast-Freeze function is activated, fresh food has just been placed in the appliance or the door has been left open for a while.
- ▶ This noise is normal.
- The ambient temperature is too high.
- ▶ Solution: (see 1.2)

A low hum.

- The sound is produced by air flow noise of the fan.
- ▶ The sound is normal.

Vibration noises

- The appliance is not standing firmly on the floor. As a result objects and adjacent units start to vibrate when the refrigerator is running.
- ▶ Check the installation and realign the appliance.
- ▶ Keep bottles and jars apart.

Flow sound at the soft stop mechanism.

- The noise is produced when the door is opened and closed.
- ▶ The sound is normal.

The temperature display indicates: F0 to F9

- There is a fault.
- ▶ Please contact the after-sales service (see 6) .

DEMO shines in the temperature display.

- The demo mode is activated.
- ▶ Please contact the after-sales service (see 6) .

The outer surfaces of the appliance are warm*.

- The heat of the refrigeration circuit is used to prevent condensate from forming.
- ▶ This is normal.

The temperature is not cold enough.

- The door of the appliance is not properly closed.
- ▶ Close the door of the appliance.
- Insufficient ventilation.
- ▶ Keep ventilation grille clear, and clean it.
- The ambient temperature is too high.
- ▶ Solution: (see 1.2) .
- The appliance was opened too frequently or for too long.
- ▶ Wait to see whether the appliance reaches the required temperature by itself. If not, please contact the after sales service (see 6) .
- The temperature is incorrectly set.
- ▶ Set the temperature to a colder setting and check after 24 hours.
- The appliance is too close to a source of heat (stove, heater etc).
- ▶ Change the position of the appliance or the source of heat.
- The appliance was not inserted properly into the recess.

- ▶ Check whether the appliance was inserted correctly and the door closes properly.

The internal light does not come on.

- The appliance is not switched on.
- ▶ Switch the appliance on.
- The door was open for longer than 15 minutes.
- ▶ The internal light switches itself off automatically after about 15 minutes if the door is open.
- The LED illumination is faulty or the cover is damaged:



WARNING

Risk of injury due to electric shock!
Live parts are located under the cover.

- ▶ Have the LED interior light changed or repaired only by the customer service or by specialized personnel trained for the purpose.



WARNING

Danger of injury by LED lamp!
The light intensity of the LED lighting corresponds to risk group RG 2.

If the cover is defective:

- ▶ Do not look into the illumination with optical lenses from the immediate proximity. This can cause injury to the eyes.

8 Decommissioning

8.1 Switching off the appliance

- ▶ Press On/Off button *Fig. 2 (1)* for approx. 2 seconds.
- ▷ A long beep is emitted. The temperature display is dark. The appliance is switched off.
- ▷ If the appliance cannot be switched off, the child lock function is active (see 5.1) .

8.2 Taking the appliance out of service

- ▶ Empty the appliance.
- ▶ Switch off the appliance (see 8) .
- ▶ Remove mains connector.
- ▶ Clean the appliance (see 6.2) .



- ▶ Leave the door open to prevent odour.

9 Disposing of the appliance

The appliance contains some reusable materials and should be disposed of properly - not simply with unsorted household refuse. Appliances which are no longer needed must be disposed of in a professional and appropriate way, in accordance with the current local regulations and laws.



When disposing of the appliance, ensure that the refrigeration circuit is not damaged to prevent uncontrolled escape of the refrigerant it contains (data on type plate) and oil.

- ▶ Disable the appliance.
- ▶ Pull out the plug.
- ▶ Cut through the connecting cable.

内容

1	设备一览	12
1.1	设备和装备一览.....	12
1.2	设备的使用范围.....	12
1.3	一致性.....	13
1.4	产品数据.....	13
1.5	节能.....	13
2	一般安全提示	13
3	操作和显示元件	14
3.1	操作和控制元件.....	14
3.2	温度显示器.....	14
4	投入使用	14
4.1	接通设备电源.....	14
5	操作	14
5.1	儿童锁.....	14
5.2	门开警报.....	14
5.3	冷藏区.....	14
5.4	保鲜控制区.....	16
5.5	冷冻室*.....	17
6	维护	18
6.1	解冻.....	18
6.2	清洁设备.....	18
6.3	客户服务.....	18
6.4	服务 & 支持.....	18
7	故障	19
8	停止使用	19
8.1	关闭设备.....	19
8.2	停机.....	19
9	处理设备	19
10	质保条件	20

感谢您购买我们的产品。您的设备满足高要求，且操作简单。尽管如此还请您花时间阅读此文件。如此您将熟悉您的设备，并且可以最优地和无故障地使用它。

请注意安全提示。

修改

文本、图片和数据与印刷此文件时的设备技术状态相符。保留继续发展和进步意义上修改的可能。

只涉及特定设备的段落用星号 (*) 标注。

操作说明用 ▶ 标识，操作结果用 ▷ 标识。

适用范围

产品系列 (型号) 对应于铭牌上的第一个位置。本文档适用于:

型号	产品系列	度量系统
Jumbo T	51092	Euro 60

1 设备一览

1.1 设备和装备一览

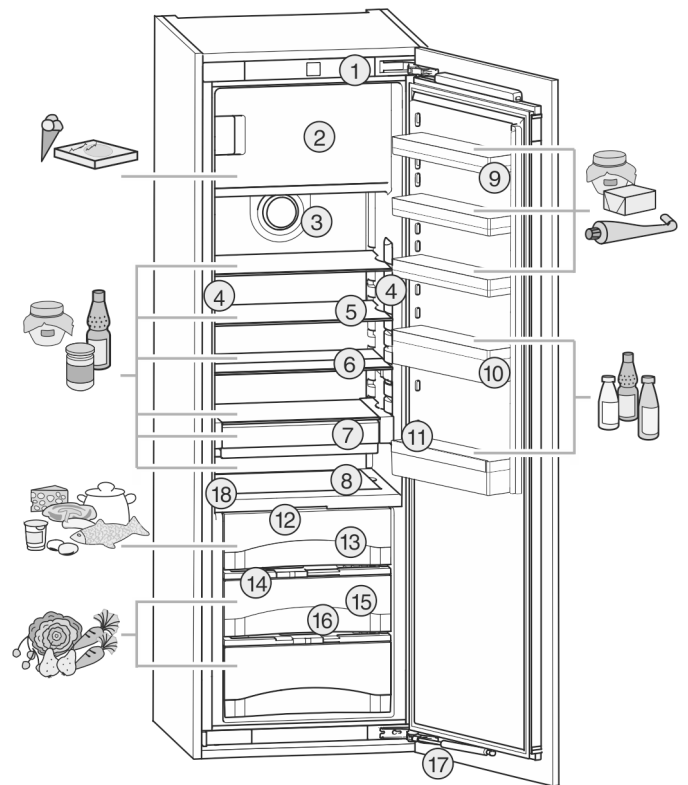


Fig. 1

- | | |
|--------------|-------------------|
| (1) 操作和控制元件 | (10) 瓶架 |
| (2) 冷冻室* | (11) 瓶架 |
| (3) 风扇 | (12) 保鲜控制区 LED 照明 |
| (4) LED 两侧灯柱 | (13) 保鲜控制室干燥区域 |
| (5) 托盘 | (14) 湿度调节板 |
| (6) 可分离托盘 | (15) 保鲜控制室保湿区域 |
| (7) FlexBox | (16) 排放口 |
| (8) 玻璃底板 | (17) 关门阻尼器 |
| (9) 挂盘 | (18) 铭牌 |

提示

- ▶ 如图所示放置食品。这样才能达到冰箱节能的目的。
- ▶ 交货时排列存放架、抽屉或篮筐的方式有助于最大限度地提高能源效率。

1.2 设备的使用范围

规定使用

设备仅适合在家庭或类似于家庭的环境中用于食品的冷却。包括在下列情况中的使用

- 在私人餐厅，早餐店中；
- 在别墅、宾馆、旅店和其他宿营地中供客人使用；
- 在承办酒席时，和类似的批发服务。

不允许其他的使用方式。

可预见误用

严禁下列应用：

- 存放和冷却药品、血浆、实验室药物或符合医学产品准则 2007/47/EG 的物质和制品
- 应用在具有爆炸危险的区域

违规使用该设备可能导致存放的物品损坏或腐烂。

气候等级

设备是根据气候等级设计用于在限制的环境温度下工作。铭牌上印有与您设备相关的气候等级。

提示

► 为保证无故障运行，遵守规定的环境温度。

气候等级	用于环境温度
SN	10 °C 至 32 °C
N	16 °C 至 32 °C
ST	16 °C 至 38 °C
T	16 °C 至 43 °C

1.3 一致性

检查制冷剂循环是否密封。冰箱在安装状态下符合相关的安全规定以及欧盟准则 2014/35/EU、2014/30/EU、2009/125/EG、2011/65/EU 和 2010/30/EU。

保鲜控制 (FreshControl) 抽屉符合 DIN EN 62552 冷冻冷藏柜的要求。

1.4 产品数据

按照法规 (欧盟) 2017/1369, 产品数据随此设备一同提供。完整的产品数据页面可在 Liebherr 网站的下载区找到。

1.5 节能

- 始终确保良好的通风和排气。不要遮盖通风口和通风格栅。
- 确保风机通风槽始终畅通。
- 不要将设备安装在太阳直接辐射的区域，或炉灶、取暖器及同类装置旁边。
- 能耗取决于安置条件，例如环境温度 (参见 1.2)。当环境温度与正常温度 25 °C 存在所偏差时，能耗会有所变化。
- 打开设备的时间尽可能短。
- 温度设置的越低，能耗越高。
- 分类存放食品 (参见 1)。
- 将所有食物包装好，并盖好后保存。避免结霜。
- 仅按需求取出食品，以避免温度过度升高。
- 放入热菜：冷却到室温才能放入。
- 在冷藏室解冻冰冻食品。*
- 如果设备中结了一层厚冰：给设备除冰。*

2 一般安全提示

对使用者的危险：

- 儿童和有生理、心理或精神障碍，或者缺乏使用经验和相关知识的人，只有当有专人监管或指导他们安全使用冰箱，并获悉由此可能引起的危险时，方可操作此冰箱。儿童不得玩耍冰箱。儿童不得在无人监管的情况下清洁和维护冰箱。3-8 岁的儿童可以为冰箱装货和卸货。在无人持续监管的情况下，小于 3 岁的儿童必须远离冰箱。
- 将设备与电源断开时，始终抓住插头。不要拉电缆。
- 出现故障时拔出电源插头或者关闭保险装置。

- 不要损坏电源连接线。不要使用损坏的电源连接线运行设备。
- 冰箱上的修理，接触和更换电源连接线只能由客户服务人员或其他接受过培训的专业人员完成。
- 只能按使用说明书的规定安装、连接以及清理设备。
- 只能操作安装完成的设备。
- 小心保管本使用说明书，如有必要转交给下一个用户。
- 设备中的特殊灯具仅用于照亮冰箱内部而不适合作为室内照明。

火灾危险：

- 所含有的制冷剂 R 600a 是环保的，但易燃。漏出的制冷剂可能自燃。
 - 不要损坏制冷回路的管道。
 - 不要在设备内使用明火或火源。
 - 在设备内部不能使用电气设备 (例如：蒸汽清洁设备、加热器、冰激淋机等等)。
 - 如果制冷剂泄漏：清除泄漏位置附近的明火或火源。使室内通风良好。通知客户服务部门。
- 请勿将易爆物品或装有可燃发酵剂的喷雾器，如丁烷、丙烷、戊烷等存放于设备内。根据印制的内容或火焰标志来识别出相应的喷雾器。可能溢出的气体会由于导致电气部件引起燃烧。
- 酒精饮料或其它装有酒精的容器只能密封存放。可能溢出的酒精会由于电气部件引起燃烧。

坠落和翻倒危险：

- 不可将基座、抽屉、拉门等当作踏板使用或用作支撑。尤其是孩子必须遵守这一规定。

食物中毒的危险：

- 不要吃喝存放过久的食品。

冻伤、麻木和疼痛的危险：

- 避免皮肤长时间与冰冷的表面或冷藏/冰冻品接触或者采取保护措施，例如：使用手套。不要立即或吃太冷的冰激淋，尤其是冰水或者冰块。

受伤和损坏危险：

- 热蒸汽会造成损坏。不要使用电气加热或蒸汽清洁设备，明火或除冰喷射装置进行除冰。
- 不要用尖利的物品除冰。

压伤危险：

- 在打开和关闭门时不得将手伸入铰链。手指可能挤伤。

设备上的符号：



符号位于压缩机上。该符号涉及压缩机中的油品并指明下列危险：油品被吞入或吸入呼吸道可能存在致命危险。该提示仅适用于回收利用过程。在正常运行过程中不存在任何危险。

操作和显示元件



这个或类似的贴纸可能贴在设备的背面。它指的是门和/或外壳中的泡沫板。该提示仅适用于回收利用过程。不要取下贴纸。

遵守其他章节中的特别提示：

	危险	指出如果不加避免，将导致死亡或严重身体伤害的直接危险情况。
	警告	指出如果不加避免，可能导致死亡或严重身体伤害的危险情况。
	小心	指出如果不加避免，可能导致轻微或中度身体伤害的危险情况。
	注意	指出如果不加避免，可能导致物质损失的危险情况。
	提示	指出有用的说明和技巧。

3 操作和显示元件

3.1 操作和控制元件

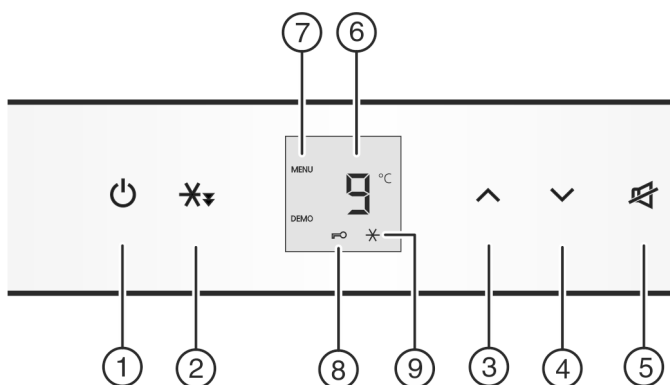


Fig. 2

- (1) 开关按键
- (2) 速冷按键
- (3) 设置键 Up
- (4) 设置键 Down
- (5) 报警按键
- (6) 温度显示
- (7) 菜单符号
- (8) 儿童锁符号
- (9) 速冷符号

3.2 温度显示器

正常运行情况下显示：

- 平均冷藏温度

下列显示指明出现故障。可能的原因和排除故障的措施：（参见 7）。

- F0 至 F9

4 投入使用

4.1 接通设备电源

首次将冷冻品放入冰箱前接通冰箱大约 2 小时。*

- ▶ 打开冰箱门。
- ▶ 按下按键 On/Off Fig. 2 (1)。
- ▷ 温度显示器显示当前温度。
- ▷ 门开时内部照明发亮。

- ▷ 如果显示器显示“DEMO”，则演示模式已激活。请联系客户服务部。

5 操作

5.1 儿童锁

使用儿童锁可以确保，孩子在玩耍时不会故意关闭设备。



5.1.1 设置儿童安全装置

- ▶ 激活设置模式：将速冷按键 Fig. 2 (2) 按住大约 5 秒。
- ▷ 显示器中显示 **c**。
- 如果显示器中显示 **cl**，则：
- ▶ 短按速冷按键 Fig. 2 (2)，开启儿童保护模式。



- ▷ 儿童保护标志 Fig. 2 (8) 发亮。显示器上 **c** 闪烁。
- 如果显示器中显示 **c0**，则：
- ▶ 短按速冷按键 Fig. 2 (2)，关闭儿童保护模式。
- ▷ 儿童保护标志 Fig. 2 (8) 熄灭。显示器上 **c** 闪烁。
- ▶ 设置模式关闭：按下按键 On/Off Fig. 2 (1)。
- 或-
- ▶ 等待 5 分钟。
- ▷ 温度显示器中重新显示温度。

5.2 门开警报

用于冷藏区
如果门打开的时间超过 60 秒，信号声鸣响。
如果门已关闭，信号声自动停止。



5.2.1 关闭门报警器的声音

- 信号音可在门打开的情况下静音。当门打开，关闭信号音就有效。
- ▶ 按下报警按键 Fig. 2 (5)。
- ▷ 门报警器不发出声音。

5.3 冷藏区

借助冷藏区中的自然空气循环，能设置不同的温度范围。隔离板上到保鲜控制 (FreshControl) 区域和后壁温度最低。顶部前面区域和柜门位置是温度最高的位置。

5.3.1 冷藏食物

提示

- 如果通风不充分，能耗升高，制冷功率减小。
- ▶ 保持风机通风口始终畅通。

- ▶ 在上部和门内放置黄油和罐头食品。（参见 1）
- ▶ 使用可重复利用的塑料、金属、铝、玻璃容器和保鲜膜用于包装。
- ▶ 容易吸收或释放气味的食物，如液体，保存在密封的容器中或盖住。
- ▶ 冷藏区底部的前面只用于短时间贮存冷藏品，例如重新布置或分类时。但冷藏品不能竖立放置，否则在关门时可能向后移动或翻倒。
- ▶ 存放食物不要太密，以保证空气能良好循环。

5.3.2 温度设置

温度取决于下列因素：

- 开门的频繁度
- 安装地点的室温

- 食物的类型、温度和数量

温度可在 9 °C 至 3 °C 之间设置，建议数值为 5 °C。

冷藏区设置大约 -18 °C 的平均温度。*

提示

若温度低于 3 °C:

- ▶ 调节冷却温度至 3 °C。
- ▶ 设置保鲜控制 (FreshControl) 温度至 **b4** (较低温度) 和 **b1** (最低温度) 之间。

- ▶ 调热温度: 按下设置键 Up Fig. 2 (3)。
- ▶ 调冷温度: 按下设置键 Down Fig. 2 (4)。
- ▷ 按第一次时温度显示器闪烁显示已设置的温度。
- ▶ 以 1 °C 为单位更改温度: 短按按键。
- ▶ 继续更改温度: 按住按键:
- ▷ 设置过程中闪烁显示数值。
- ▷ 最后一次按键后大约 5 秒显示实际温度。温度缓慢设置到新值。

5.3.3 速冷

使用速冷功能切换到最大制冷功率。以此达到较低的制冷温度。使用速冷，快速制冷大量食品。



速冷功能的能量消耗会高一些。

使用速冷功能制冷

- ▶ 短按速冷按键 Fig. 2 (2)。
- ▷ 速冷符号 Fig. 2 (9) 在显示屏中闪烁。
- ▷ 制冷温度降到最低值。速冷已开启。
- ▷ 速冷功能在 12 小时后自动关闭。设备以节能的正常工作模式继续工作。

提前关闭速冷功能

- ▶ 短按速冷按键 Fig. 2 (2)。
- ▷ 速冷符号 Fig. 2 (9) 在显示屏中熄灭。
- ▷ 速冷已关闭。

5.3.4 托盘

移动或取出托盘

通过防抽出阻挡装置防止意外拉出托盘。

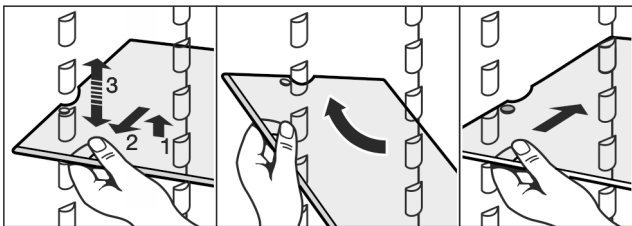
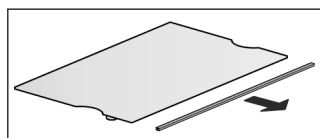


Fig. 3

- ▶ 抬高托盘并向前拉出。
- ▶ 若要完全取出托盘，应倾斜放置并向前拉出。
- ▶ 重新将托盘推至所需高度。防抽出阻挡装置必须指向下方并平放在前方支承面的后侧。

拆开托盘

- ▶ 可拆开托盘以进行清洁。



5.3.5 使用可分离的托盘

- ▶ 如图向下推可分离的托盘。

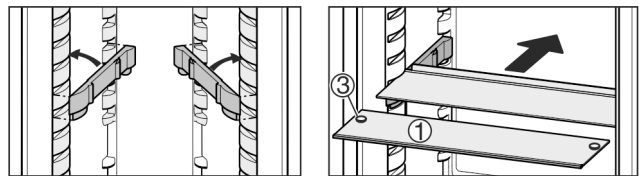
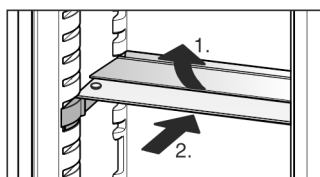


Fig. 4

- ▶ 带有防抽出阻挡装置的玻璃托盘 (1) 必须平放在前方，以便使阻挡装置 (3) 指向下方。
- ▶ 设备带有冷冻抽屉时，不得将支撑轨和可分离的托盘安装在风机前。*

5.3.6 瓶子底座

冷藏区瓶子底座可取出清洁:

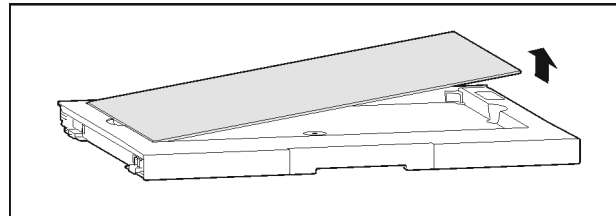


Fig. 5

5.3.7 FlexBox

FlexBox 提供的空间可放置小体积食品和包装、管件和玻璃器皿。

使用 FlexSystem

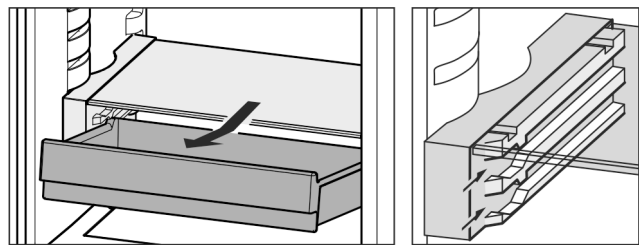
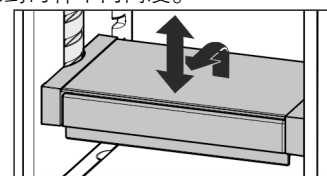


Fig. 6

- ▶ FlexBox 抽屉可以拉出并推入到两种不同高度。
- ▶ FlexBox 可作为整体进行高度调节。
- ▶ 若要完全取出，应倾斜放置并向前拉出。



拆卸 FlexBox

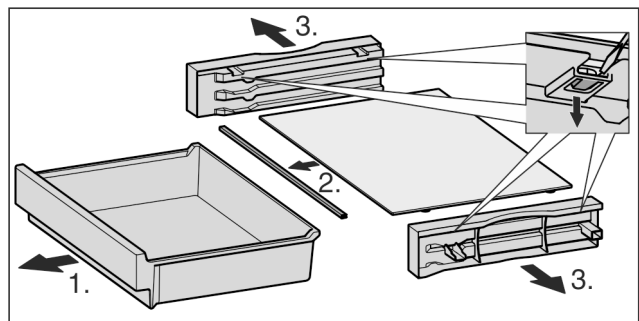


Fig. 7

- ▶ FlexBox 可拆卸清洁。

操作

5.3.8 挂盘

移动挂盘

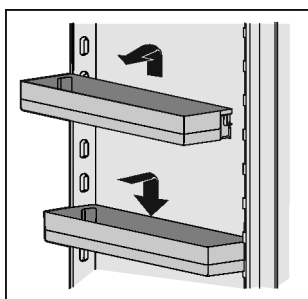


Fig. 8

- ▶ 按图取出挂盘。

拆开挂盘

- ▶ 可拆开挂盘以进行清洁。

5.3.9 使用瓶架

为了防止瓶子翻倒，可使用瓶架。为了仅使用部分架子来容纳瓶子，可以取出一半的瓶架。

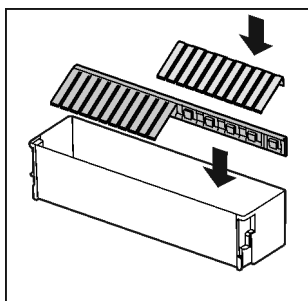


Fig. 9

取出和装入瓶架：

- ▶ 瓶架垂直向上提起或向下装入到位。

取出和装入瓶架：

- ▶ 左和/或右半边垂直向上提起。
- ▶ 半边瓶架垂直向下装入任意位置。

5.4 保鲜控制区

和常规制冷相比，一些新鲜食品可在质量不变的情况下，在保鲜控制区存放长达三倍的存放时间。

包装上注明的日期适用于带保质期说明的食品。

5.4.1 干燥区域



干燥区域适合存放干燥或包装食品（例如奶制品、肉、鱼、香肠）。在此设置了相当干燥的储存气候。

5.4.2 保湿区域

此区域的空气湿度取决于放入的冷藏品的含水量和打开的频率。您可以自己设置湿度。

保湿区域适合在设置为保湿状态下存放未包装且自身水分含量较高的沙拉、蔬菜、水果。抽屉装满时，设置成十分新鲜的气候，空气湿度高达 90%。

5.4.3 调节保湿区湿度

- ▶  低空气湿度：将调节器推向左方。
- ▶  高空气湿度：将调节器推向右方。



5.4.4 存放食品

提示

- ▶ 不要在保鲜控制 (FreshControl) 区存放怕冻的蔬菜，如黄瓜、茄子、西红柿、胡瓜以及所有怕冻的南方水果。

- ▶ 防止食品感染细菌而腐烂：未包装的肉类和植物类食品分开储藏于抽屉内。这一点也适用于不同种类的肉类。

如果因为空间不足而必须将食品须放在一起时：

- ▶ 请将食品包装好。

5.4.5 存放时间

温度为 0 °C 且空气湿度较低时存放时间的参考值

黄油	最多	90	天
硬奶酪	最多	110	天
牛奶	最多	12	天
切片香肠	最多	9	天
家禽	最多	6	天
猪肉	最多	7	天
牛肉	最多	7	天
野味	最多	7	天

提示

- ▶ 注意富含蛋白质的食品腐烂的速度较快，也就是说，贝类和甲壳类比鱼类腐烂的要快，鱼类比肉类腐烂的快。

温度为 0 °C 且空气湿度较高时存放时间的参考值

蔬菜、沙拉

朝鲜蓟	最多	14	天
芹菜	最多	28	天
菜花	最多	21	天
西兰花	最多	13	天
菊苣	最多	27	天
野苣苣	最多	19	天
豆子	最多	14	天
绿甘蓝	最多	14	天
红萝卜	最多	80	天
大蒜	最多	160	天
大头菜	最多	55	天
生菜	最多	13	天
卷心菜	最多	13	天
南瓜	最多	29	天
蘑菇	最多	7	天
水萝卜	最多	10	天
球芽甘蓝	最多	20	天
芦笋	最多	18	天
菠菜	最多	13	天
皱叶甘蓝	最多	20	天

水果

杏	最多	13	天
苹果	最多	80	天

温度为 0 °C 且空气湿度较高时存放时间的参考值			
梨	最多	55	天
黑莓子	最多	3	天
枣椰	最多	180	天
草莓	最多	7	天
无花果	最多	7	天
黑莓	最多	9	天
覆盆子	最多	3	天
甜瓜	最多	7	天
甜樱桃	最多	14	天
猕猴桃	最多	80	天
桃子	最多	13	天
李子	最多	20	天
曼越橘	最多	60	天
大黄	最多	13	天
醋栗	最多	13	天
葡萄	最多	29	天

5.4.6 设置保鲜控制区的温度

建议冷藏区设置：5 °C。FreshControl 温度自动调节并介于 0 °C 和 3 °C 之间。

您可以将温度设置得微冷或微热。温度可以在 **b1**（最冷）至 **b9**（最热）之间设置。预设的值是 **b5**。在 **b1** 至 **b4** 之间温度可以降低至 0 °C 以下，以便能够冷冻食品。

▶ 激活设置模式：将速冷按键 Fig. 2 (2) 按住大约 5 秒。

▷ 菜单符号 Fig. 2 (7) 亮起。温度显示器中显示 **c**。

▶ 反复按 设置键 Up Fig. 2 (3)，直至显示器上 **b** 亮起。

▶ 确认：短按 速冷按键 Fig. 2 (2)。

▶ 调热温度：按下 设置键 Up Fig. 2 (3)。

▶ 调冷温度：按下 设置键 Down Fig. 2 (4)。

▶ 确认：按下 速冷按键 Fig. 2 (2)。

▷ 温度缓慢设置到新值。



▶ 设置模式关闭：按下 按键 On/Off Fig. 2 (1)。

-或-

▶ 等待 5 分钟。

▷ 温度显示器中重新显示温度。

5.4.7 包含减震器的抽屜

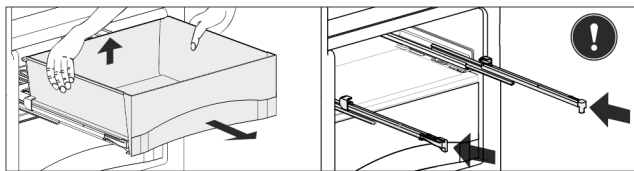


Fig. 10

▶ 拉出并向后抬高抽屜，然后向前挪开。

▶ 重新推入轨道！

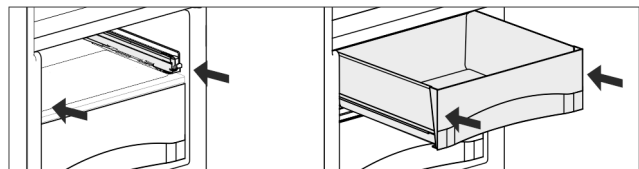


Fig. 11

▶ 推入轨道。

▶ 放置并推入抽屜，直到在后方听到卡紧的声音。

5.4.8 湿度调节板

▶ 取出湿度调节板：取出抽屜时小心向前拉动并向下挪开湿度调节板。

5.5 冷冻室*

您可使用冷冻室以 -18 °C 或更低的存放温度将深冷冻食品和冷藏品存放数月，制备冰块并冷冻新鲜食品。

通过温度计或其它测量工具测出的冷冻室中的空气温度可能变化。

5.5.1 冷冻食品

在 24 小时内能够冷冻的新鲜食品量，参见铭牌上说明的（参见 1）“冷冻能力 ... kg/24h”。



小心

玻璃破碎引起的受伤危险！

装有饮料的瓶子和罐头可能在冷藏时爆炸。这尤其适用于碳酸饮料。

▶ 不要冷藏装有饮料的瓶子和罐头！

▶ 冷冻前 4 小时打开速冷并将温度设定到 4 °C 或更低。*

▶ 冷冻后可重置温度，并关闭速冷。*

▶ 放入货物时开启速冻。

为了使食品迅速冻透，不要超过下列每个包装的数量：

- 水果，蔬菜不超过 1 kg

- 蔬菜至 2.5 kg

▶ 将食品一份一份地包装在冷冻袋、可重复利用的塑料、金属或铝容器中。

5.5.2 存放时间

冷冻室中不同食品存放时间的参考值：	
冰激淋	2 至 6 个月
香肠，火腿	2 至 6 个月
面包，烘烤食品	2 至 6 个月
野味，猪肉	6 至 10 个月
鱼，含脂肪	2 至 6 个月
鱼，脱脂	6 至 12 个月
奶酪	2 至 6 个月
家禽，牛肉	6 至 12 个月
蔬菜，水果	6 至 12 个月

说明的存放时间为标准值。

5.5.3 食品解冻

- 在冷藏室

- 微波炉内

- 烤炉/热风炉内

- 在室温下

▶ 只能按需要取出食物。尽可能快地加工解冻的食物。

▶ 解冻的食物只能在例外的情况下才能重新冷冻。

维护

6 维护

6.1 解冻

6.1.1 冷藏区除冰

冷藏区自动除冰。融化水蒸发。由于功能限制而产生后壁上的水滴是完全正常的。

- ▶ 定期清洁排放口，以排走融化水。(参见 6.2)

6.1.2 冷冻抽屉除冰*

工作较长时间后冷冻抽屉中会形成一层冰霜或冰层。这完全属于正常现象。如果门常常打开或放入的食品是热的，会更快形成冰霜或冰层。较厚的冰层会增加能耗。所以应定期给设备除冰。



警告

受伤和损坏危险!

- ▶ 为加速除霜进程，请勿使用非由制造商推荐的机械辅助工具和其它工具。
- ▶ 不要使用电气加热或蒸汽清洁设备，明火或除冰喷射装置进行除冰。
- ▶ 不要用尖利的物品除冰。
- ▶ 不要损坏制冷回路的管道。

- ▶ 关闭设备。
- ▷ 温度显示器熄灭。
- ▷ 当温度显示器没有熄灭时，儿童锁激活。(参见 5.1)。
- ▶ 拔出电源插头。
- ▶ 将冷冻品包在报纸中或用盖子盖住，存放在阴凉处。
- ▶ 在除冰过程中需打开抽屉和冰箱门。
- ▶ 取出松动的冰块。
- ▶ 注意不要让融化水流入家具中。
- ▶ 融化水可能需要用海绵或抹布多次吸收。
- ▶ 清洁抽屉。(参见 6.2)

6.2 清洁设备



警告

由于烫的蒸汽造成的受伤和损坏危险!
热蒸汽可能会导致烫伤并损坏表面。

- ▶ 不要使用蒸汽清洁设备!

注意

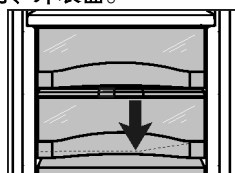
错误清洁会损坏设备!

- ▶ 不要使用浓缩的清洁剂。
- ▶ 不要使用磨擦大或硬的海绵状金属或钢丝绒。
- ▶ 请勿使用锋利的、磨擦性的、含砂、氯或酸的擦亮剂。
- ▶ 不要使用化学溶剂。
- ▶ 不要损坏或拆除设备内侧的铭牌。这对客户服务非常重要。
- ▶ 不要拉断、扭折或损坏电缆或其他部件。
- ▶ 不要让清洁水流入水槽、通风格栅和电气部件中。
- ▶ 用软抹布和中性 PH 值的万用清洁剂。
- ▶ 在设备内只能使用不影响食物的清洁剂和保养材料。

- ▶ 清空设备。
- ▶ 拔出电源插头。



- ▶ 用温水和少许洗涤剂手洗塑料制成的内、外表面。
- ▶ 清洁排水孔：沉积物用小的辅助工具，例如小棉棒清除。



- ▶ 大部分装备部件可以拆卸清洁：参见相应章节。
- ▶ 用温水和少许洗涤剂手洗抽屉。

- ▶ 其余设备组件可在洗碗机中清洗。
- ▶ 只能使用湿布清洁伸缩架。导轨中的油脂起到润滑作用，不得清除。

清洁后：

- ▶ 擦干设备和装备部件。
- ▶ 重新连接设备，并接通电源。
- 如果温度够低：
- ▶ 重新放入食物。

6.3 客户服务

首先确定您是否可自行排除故障。(参见 7) 如果不行，联系客服服务部。地址可以在附带的客户服务目录中查找。



警告

非专业人员修理可能引起受伤危险!

- ▶ 在(参见 6)中没有明确说明的在设备和电源连接线上进行的修理和其他工作只能由客户服务人员完成。

- ▶ 读取铭牌上的设备名称 Fig. 12 (1)、服务号 Fig. 12 (2)和序列号 Fig. 12 (3)。铭牌位于设备内左侧。

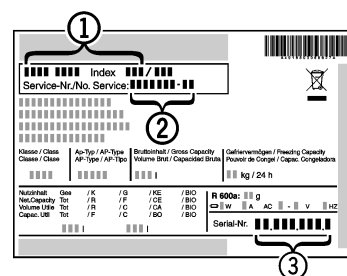


Fig. 12

- ▶ 通知客户服务部，并告知故障、设备名称 Fig. 12 (1)、服务号 Fig. 12 (2)和序列号 Fig. 12 (3)。
- ▷ 以便及时获得有针对性的服务。
- ▶ 让设备保持关闭，直到客户服务人员到达。
- ▷ 食品保持较长时间冷却。
- ▶ 拔掉电源插头(此时不要拉连接电缆)或关闭保险装置。

6.4 服务 & 支持

在章节 故障 您可获得有关小的操作故障的有用提示信息。这样节省了您对维修技术人员的需求以及由此产生的费用。

我们的保修信息位于 www.vzug.com -> 服务-> 保修信息。请仔细阅读。

请立即注册您的设备：

- 在线通过 www.vzug.com -> 服务-> 保修注册或
- 通过附带的注册卡，如有的话。

在设备的保修期期间，您将在出现可能的故障时从最佳的支持中得益。注册需提供序列号 (FN) 和设备图纸。您可在设备铭牌上找到这些信息。

我的设备信息：

序列号：_____ 设备：_____

当您联系 V-ZUG 时，始终准备好这些设备信息。非常感谢。

您的维修订单

在瑞士境内，您可以通过免费服务电话 0800 850 850 直接与最近的服务中心联系。接到您的电话委托后，我们将根据您的要求与您约定立即现场拜访的日期。

瑞士以外的客户请访问 www.vzug.com -> 服务-> 服务电话，查询登录信息或您当地服务中心的联系信息。

一般询问和技术询问、零配件、服务延长和/或保修期延长

V-ZUG 很乐意为您提供一般的行政和技术咨询，接受您的配件和备件订购或通知您有关升级服务合同。您可通过 www.vzug.com、info@vzug.com、您当地的服务中心和瑞士境内 (+41) 58 767 67 67 联系我们。

7 故障

您设备的设计和制造可保证功能安全和长使用寿命。但如果在运行过程中出现故障，请检查故障是否由于操作错误导致。在这种情况下即使在质保期内所产生的费用也必须由您承担。下列故障您可以自己排除：

设备不工作。

- 设备没有接通。
- ▶ 接通设备电源。
- 电源插头没有正确插入插座。
- ▶ 检查电源插头。
- 插座的保险装置不正常。
- ▶ 检查保险装置。

压缩机长时间运行。

- 在制冷需求极小时压缩机转换到低转速。尽管运行时间增加，但节约了能源。
- ▶ 在节能型号中这是正常的。
- 速冷开启。
- ▶ 为了迅速冷却食品，压缩机运行时间较长。这是正常的。

噪音过大。

- 调速*压缩机由于不同的转速级可能产生不同的运转噪音。
- ▶ 噪音是正常的。

咕噜声或潺潺声

- 这些噪音来自在制冷循环中流动的制冷剂。
- ▶ 噪音是正常的。

轻微喀嚓声

- 当制冷机组（电机）自动启动或关闭时，总会产生噪音。
- ▶ 噪音是正常的。

轰隆响声。当制冷机组（电机）启动时，短时间内噪音较大。

- 速冷开启时，新放入的食品或长时间打开门后制冷功率自动升高。
- ▶ 噪音是正常的。
- 环境温度过高。
- ▶ 排除故障：（参见 1.2）

较大轰隆响声

- 噪音是由于风机的空气流噪音产生的。
- ▶ 噪音是正常的。

振动噪音

- 设备没有稳固地放置在地面。这使物品和旁边的家具被运行的制冷机组带动振动。
- ▶ 检查安装，必要时调整设备。
- ▶ 将酒瓶和容器移开。

减震器上的流体噪音。

- 打开和关闭门时产生噪音。
- ▶ 噪音是正常的。

温度显示器中显示：F0 至 F9

- 存在故障。
- ▶ 联系客户服务部（参见 6）。

温度显示器中 DEMO 亮起。

- 演示模式被激活。
- ▶ 联系客户服务部（参见 6）。

设备外表面很热。

- 制冷循环的热量用于避免形成冷凝水。
- ▶ 这是正常的。

温度不够低。

- 设备门没有正确关闭。
- ▶ 关闭设备门。
- 通风/排气不够。
- ▶ 取下并清洁格栅。
- 环境温度过高。

- ▶ 排除故障：（参见 1.2）。
- 设备打开过于频繁或时间过长。
- ▶ 等待，所需温度是否自己重新设置。如果不行，联系客户服务部（参见 6）。
- 温度设置错误。
- ▶ 温度设置较低，24 小时后检查。
- 设备离热源（炉灶、取暖器等）太近。
- ▶ 更改设备或热源位置。
- 设备未正确安装于壁龛中。
- ▶ 检查设备是否已正确安装，门是否正确关闭。

内部照明不亮。

- 设备没有接通。
- ▶ 接通设备电源。
- 门打开时间超过 15 分钟。
- ▶ 内部照明在门打开时大约 15 分钟后自动关闭。
- LED 照明损坏或盖子损坏：



警告

电击受伤危险！

盖子下有导电部件。

- ▶ LED 内部照明只能由客户服务部或接受过培训的专业人员更换或修理。



警告

LED 灯有造成伤害的危险！

LED 照明的发光强度等于风险组 RG 2。

盖子损坏时：

- ▶ 不能透过周围的光学镜片直视照明。眼睛可能因此受伤。

8 停止使用

8.1 关闭设备

- ▶ 按下按键 On/Off Fig. 2 (1) 约 2 秒。
- ▷ 发出长时间蜂鸣声。温度显示器变暗。设备关闭。
- ▷ 如果未关闭设备，则儿童锁激活（参见 5.1）。

8.2 停机

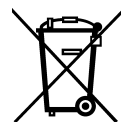
- ▶ 清空设备。
- ▶ 关闭设备（参见 8）。
- ▶ 拔出电源插头。
- ▶ 清洁设备（参见 6.2）。

- ▶ 把门打开，以避免形成不好的气味。



9 处理设备

设备还包含有价值的材料，应从未分类的住宅垃圾中分离出来。必须按当地有效的规定和法律正确地处理报废的设备。



在运出时不要损坏报废设备的制冷循环，以避免所含的制冷剂（铭牌上的说明）和油随意流出。

- ▶ 使设备不可再用。
- ▶ 拔出电源插头。
- ▶ 断开连接电缆。

质保条件

10 质保条件

部件名称	危险物质									
	铅 (Pb)	汞 (Hg)	镉 (Cd)	六价铬 (Cr VI)	多溴化 联苯 (PBB)	多溴联 苯醚 (PBDEB)	邻苯二甲酸二 (2- 乙基己基)酯 (DEHP)	邻苯二甲 酸丁苄酯 (BBP)	邻苯二甲 酸二 丁酯 (DBP)	邻苯二甲 酸二异丁 酯 (DIBP)
线缆和接线	○	○	○	○	○	○	○	○	○	○
电气和电子组 件包含 PCB	✕	○	○	○	○	○	○	○	○	○
压缩机	✕	○	✕	○	○	○	○	○	○	○
内衬和其他塑 料和聚合物部 件	○	○	○	○	○	○	○	○	○	○
铸件、金属部 件	○	○	○	○	○	○	○	○	○	○
玻璃	○	○	○	○	○	○	○	○	○	○
绝缘材料	○	○	○	○	○	○	○	○	○	○

镉和铅的存在不会妨碍正确回收。在一般使用条件下，不存在对于人或环境的风险。

该表格依照 SJ/T 11364 的规定起草。

○：指明该部件所有均质材料中包含的所述危险物质低于 GB/T 26572 的限制要求。

✕：指明用于该部件的至少一种均质材料中包含的所述危险物质高于 GB/T 26572 的限制要求。

(各企业可根据自身实际环境在该框中进一步提供标记“✕”的技术说明。)

20181211 7088147-00
1069147-R01

V-ZUG AG, Industriestrasse 66, CH-6302 Zug
Tel. +41 58 767 67 67, Fax +41 58 767 61 61
info@vzug.com, www.vzug.com

